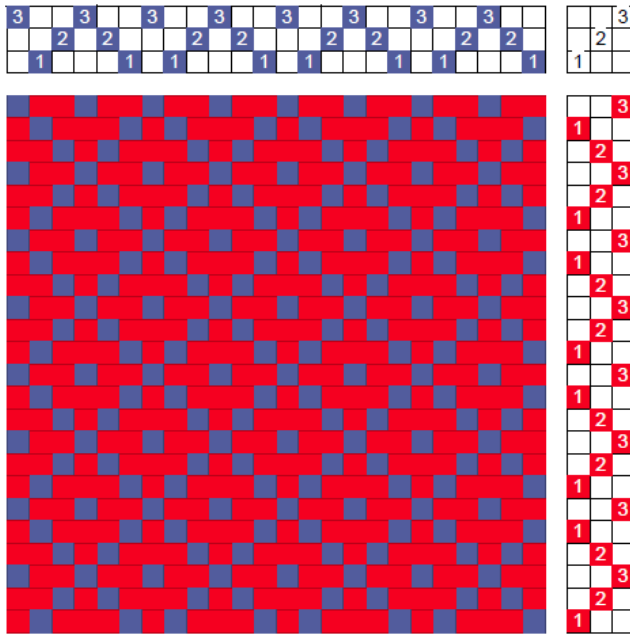
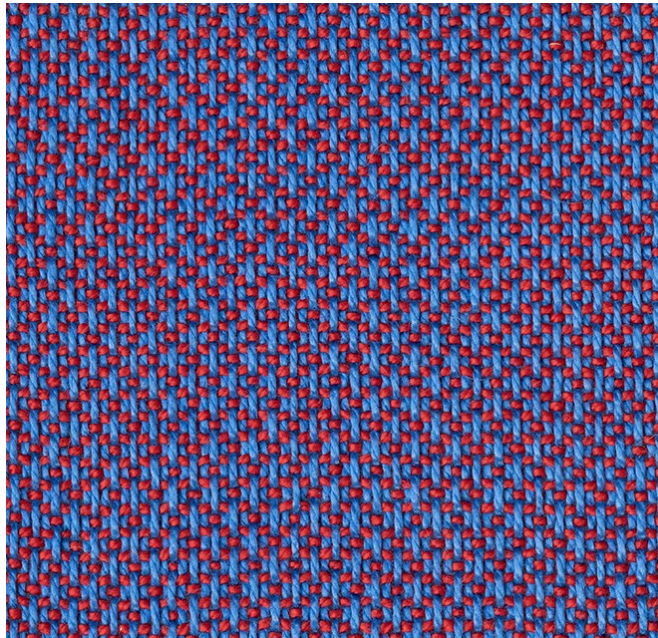


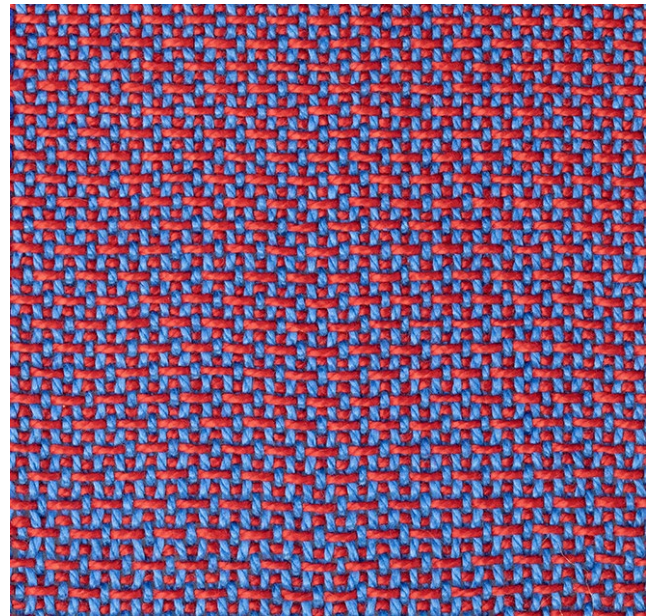
Three-Shaft Rosepath Twill



The drawdown is above. As any other structure woven on an odd number of shafts, the fabric is unbalanced: one side is weft dominant, the other warp dominant. The drawdown is for a rising



This twill is one of my favorites from Erica De Ruiter's book, *Weven op 3 schachten. Weaving on 3 shafts* (Selma Sindram, Marian Stubenitsky, 2021). There are many more structures to be explored in this book.



shed loom; one shed is raised at a time, leaving the weft to cover the threads on the other two shafts that did not rise.

Above is the weft-dominant side of the fabric; on the left is the warp-dominant side.

The threads on shaft 3 between the pointed twill threadings form the square in the middle of the diamonds and extend its size. As in the [four-shaft rosepath](#) version, adding the thread

between pointed threadings makes the design more complex.